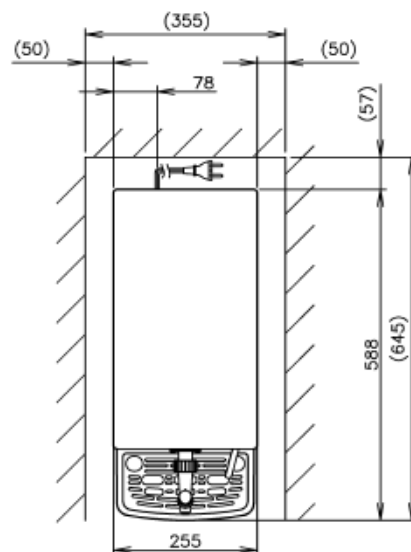
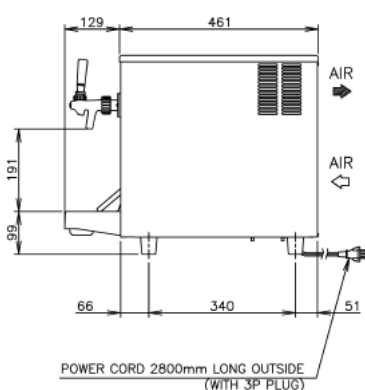
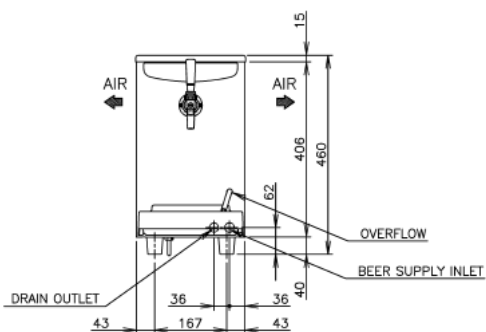


The perfect solution for cafes, restaurants, boutique bars and home use. Ideal for dispensing beer, wines, ciders or any premix beverage.



## Features

- Compact high-performance design
- Dispenses cold beer straight from ambient kegs
- Beer dispenser taps c/w creamer function. Allows user to create a smooth creamy head
- Easily removable, cleanable condenser filters means minimal service calls
- Totally enclosed design
- Stainless steel outer for sleek attractive look
- Ice bank 4kg
- Plug 'n' Play beer system
- Installation kit includes:
  - Harris single AS5034 bottle mount CO2 regulator
  - Nitto coil gas line & valve
  - Keg coupler MFAB complete with pin valves
  - Beer inlet line valve
- Power supply 1 Phase 240V 50Hz (2.2A)
- Refrigerant R134a/90g
- Insulation Polyurethane Foam Cyclopentane

## Configuration

Dimensions	Width: 255mm   Depth: 587mm   Height: 460mm
Weight	Net 24kg (Gross 27kg)
Dispensing capacity	25L / 4 hours)
Electrical	1 Phase 240V 50 Hz
Ice storage capacity	4L
Refrigerant	R134a, 95kg
Ambient temperature	5°C - 35°C

### Warranty

For warranty specifics by product, contact your Lancer Sales Representative, Equipment design and/or specifications are subject to change without notice.